

Dear Member

PLACE AND SUSTAINABILITY OVERVIEW AND SCRUTINY PANEL - THURSDAY, 13TH MARCH, 2025

Please find attached, for consideration at the next meeting of the Place and Sustainability Overview and Scrutiny Panel, taking place on Thursday, 13th March, 2025, the following reports that were unavailable when the agenda was published.

Agenda No Item

7. **Update on Local Nature Recovery Strategies - Presentation (Pages 3 - 20)**

To receive a presentation giving an update on work to prepare a strategy for the delivery of nature recovery.

Yours sincerely

Democratic Services

Encs

This page is intentionally left blank



Nature
Recovery
Hampshire

Local Nature Recovery Strategy for Hampshire

3

Agenda Item 7



What is a Local Nature Recovery Strategy?

In June 2023, HCC were appointed by the Secretary of State for Defra to prepare the Strategy for Hampshire.

Introduced by the Environment Act 2021, Local Nature Recovery Strategies (LNRS) are a new system of plans for nature recovery covering the whole of England. They are a key mechanism for planning and delivering the [National Nature Recovery Network](#) and consist of:



Local Habitat Map



A Statement of
Biodiversity
Priorities

The Local Habitat Map comprises three layers:

- Areas of particular importance for biodiversity
- Measures
- Areas that could become of particular importance for biodiversity



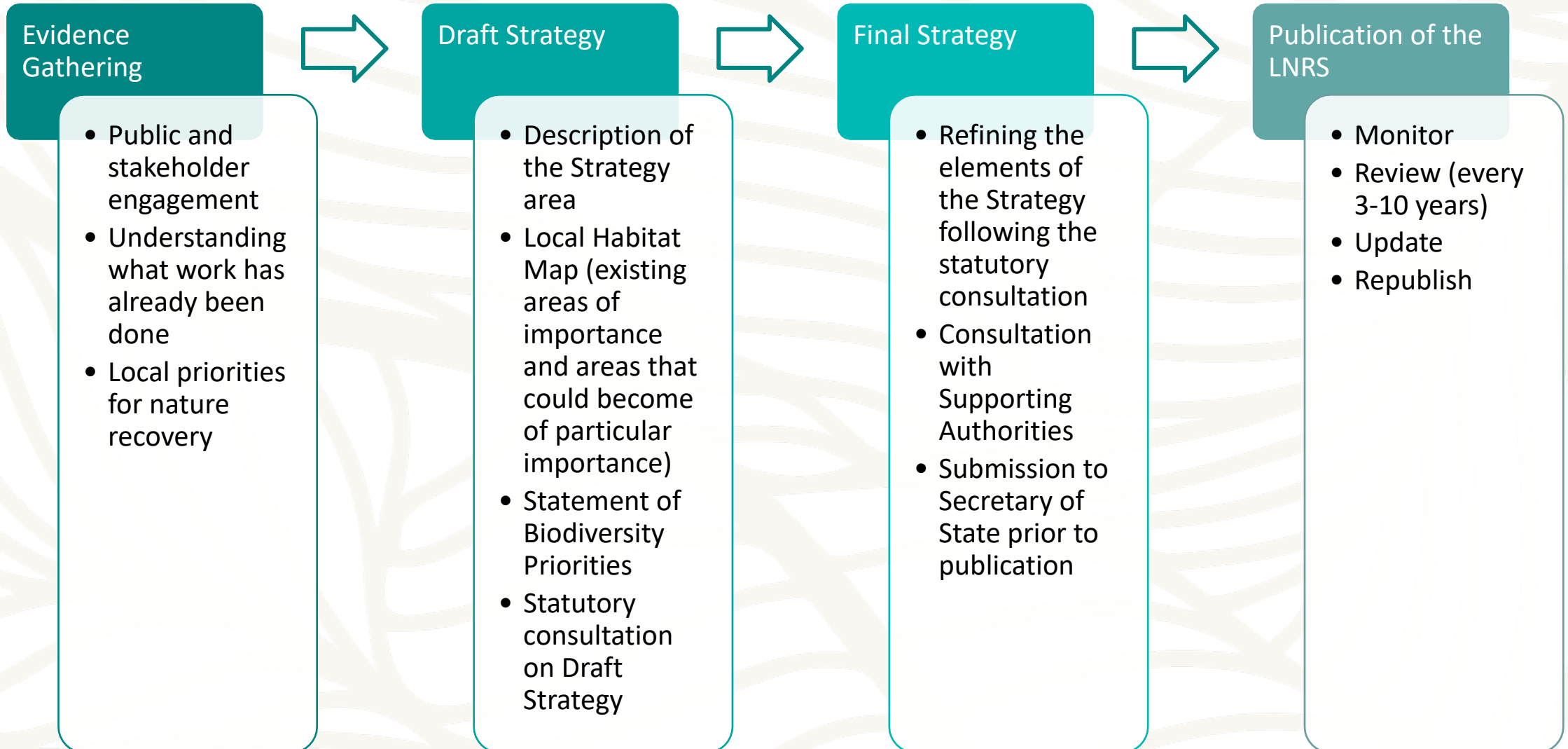
How will the LNRS be used?

- Guide mandatory biodiversity net gain (BNG) investments to achieve the most impact and value for nature
- Provide a source of evidence for local planning authorities, helping these authorities understand locations important for conserving and enhancing biodiversity
- Map areas of opportunity for the use of “nature-based solutions” to wider environmental problems like flooding, climate change mitigation and adaptation or poor water quality
- Channel investment into local priorities for protection and enhancement, such as the Environment Land Management scheme

What is the LNRS process?



Nature
Recovery
Hampshire



Partners and key stakeholders



Nature
Recovery
Hampshire

A Steering Group was set up which includes representatives of key partner organisations and meets monthly to help drive the project forward.



A Working Group was also established for all of the Local Planning Authorities across Hampshire who are supporting authorities in the process.

HCC also have thematic groups that feed into the Steering Group including:

- Farmers and Landowners
- Coastal and Marine (Working with Solent Forum and IOW Council)
- Urban and Local Communities
- Data and Mapping
- Stakeholder Engagement and Communications



**Hampshire &
Isle of Wight**
Wildlife Trust



Engagement



Nature
Recovery
Hampshire

Between January and March HCC ran a series of workshops with key stakeholders on the following themes:



Woodland & forestry



Rivers & wetlands

∞



North Hampshire farming & conservation



Thames Basin and Wealden Heaths



Central chalk belt farming & conservation



South Hampshire farming & conservation



New Forest & forest fringes



Coastal onshore/offshore habitats



Urban & local communities



Access, health & wellbeing



Species recovery

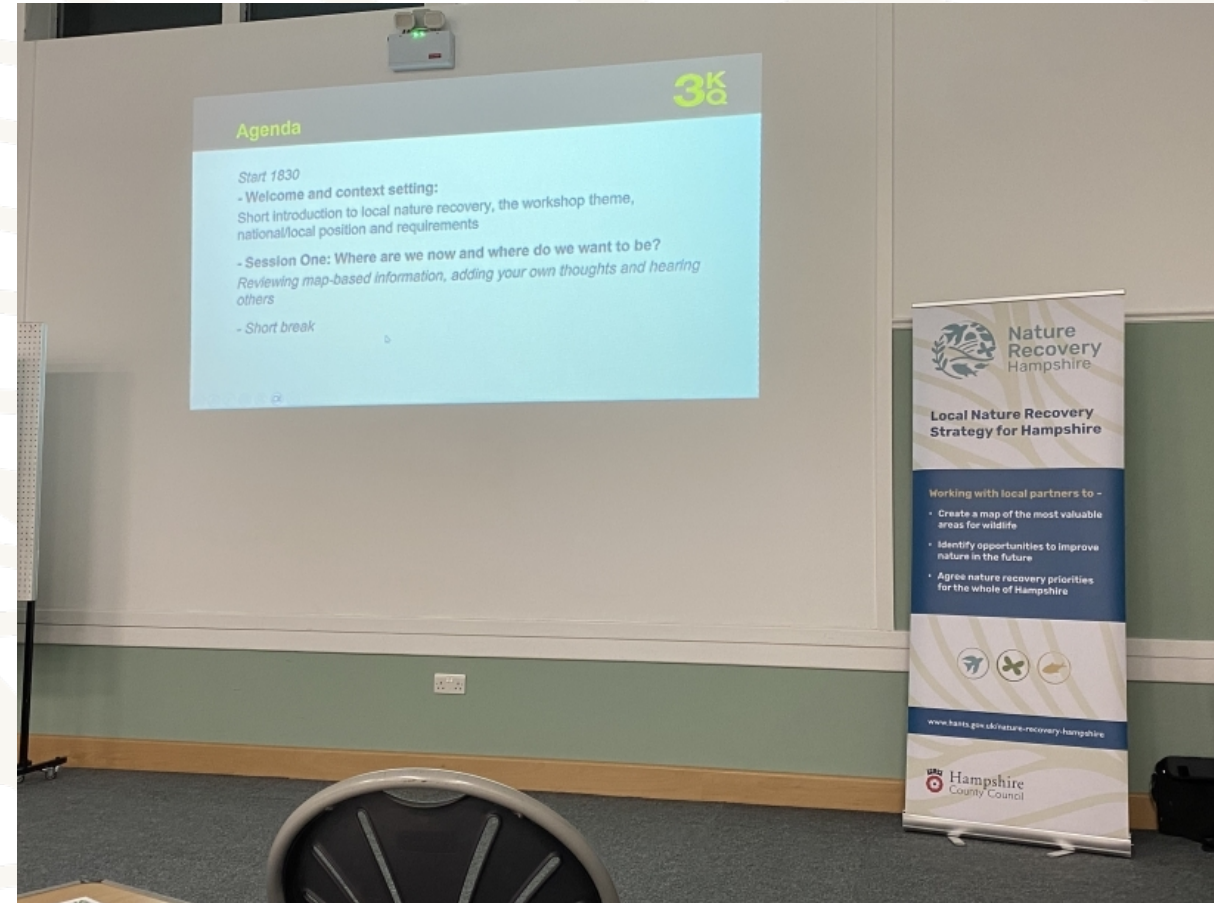
HCC also ran a series of community workshops, hosted by the Hampshire & Isle of Wight Wildlife Trust

Engagement



Nature
Recovery
Hampshire

- From the 20 workshops held, over 450 attendees representing over 100 organisations resulting in 2,064 responses, generating 257 potentially mappable priority outcomes
- The New Forest workshop had 40 attendees, including representation from parishes, verderers, charities, farms, and estates
- The New Forest community workshop had 25 attendees



Public Survey



Nature
Recovery
Hampshire

An online map-based survey ran from 14 December 2023 – 17 March 2024 to seek public opinion on their priorities for nature recovery and asked them to identify areas for improvement for nature.



Hampshire County Council is leading on a Local Nature Recovery Strategy for the whole of Hampshire, including Portsmouth and Southampton, as required by the Environment Act 2021. The Local Nature Recovery Strategy for Hampshire is a locally-led collaborative strategy which will set out the priorities for nature recovery and help to shape how future funding will be spent to maximise benefits for both people and nature.

We are working with all the key local partners, including the wildlife and farming organisations and our Local Planning Authorities and we also want to hear:

- where **you** would like to see improvements for nature recovery,
- what **your** priorities for nature are, and
- what barriers stop **you** from accessing nature.

By taking the survey below you will help us ensure that local views on nature are identified and reflected in the Strategy.

10



Nature Recovery
Hampshire

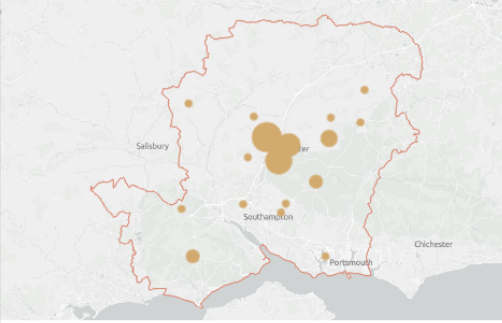
Find out more about Nature Recovery Hampshire.

Main NRH pages



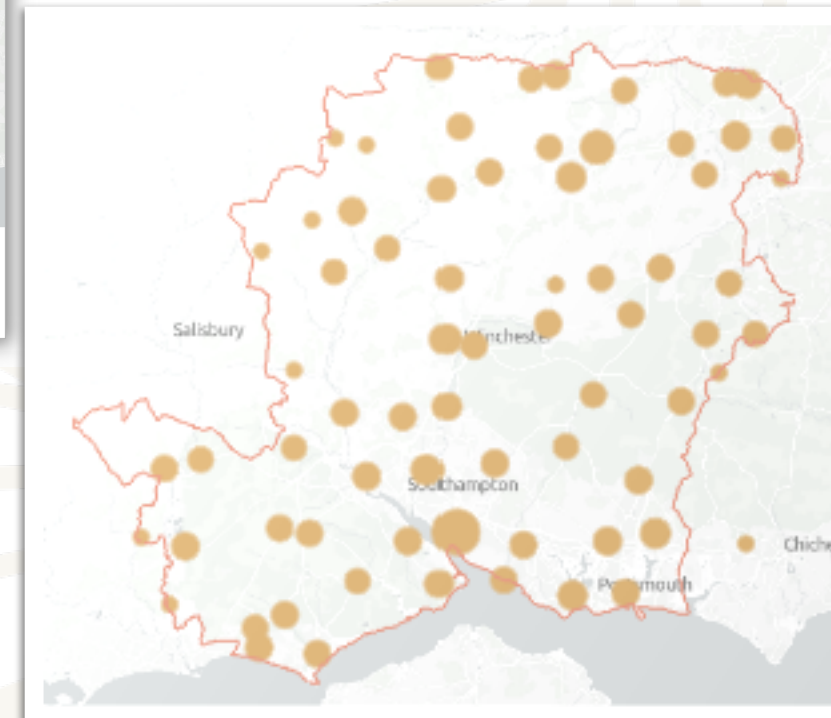
Tell us about your priorities for nature recovery in Hampshire.

Take the Survey



See nature recovery priorities and locations identified by others.

Survey results map

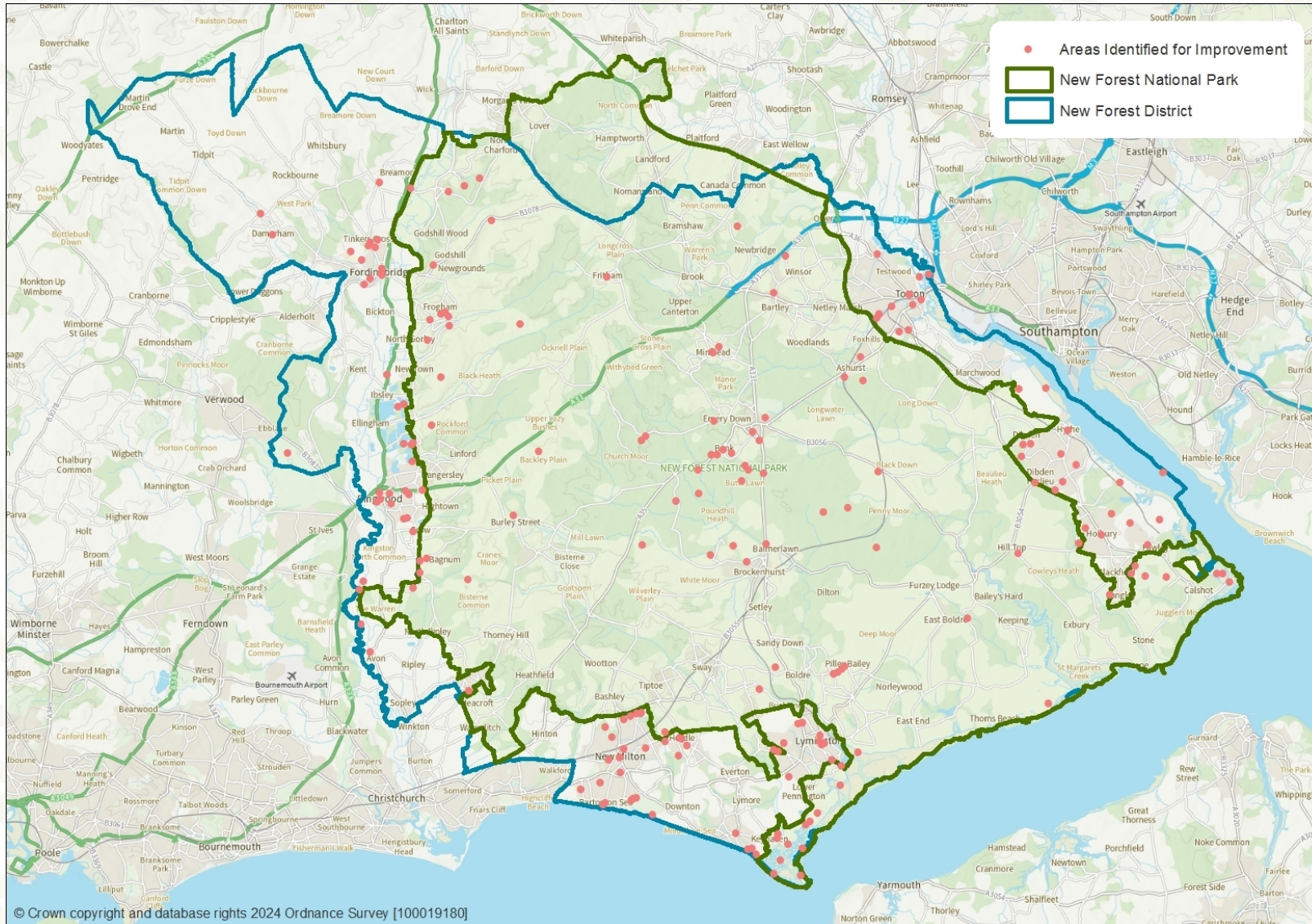


HCC received **1,234** individual responses and **1,574** areas for improvement were identified.

Survey results



Nature
Recovery
Hampshire



- 81 responses were received from people within the New Forest area, with 92 areas for improvement identified
- In identifying these locations for improvement, the respondents told us that they want to see:
 - Balancing Conservation and Access
 - Wildlife Protection
 - Habitat Restoration and Management
 - Community Engagement
 - Providing alternative recreational space and increased waterside access

Issues and Opportunities for the New Forest



Nature
Recovery
Hampshire

Key Issues for Nature

- Climate change
- Recreation and access
- Water quality and light pollution
- Air pollution
- Loss of grazing and commoning culture
- Lack of baseline data
- Threats to species
- Preserving the landscape character and sense of place

Opportunities for Nature Recovery

- Connectivity: trees and grassland
- Connectivity: wetland restoration and pond creation
- Cross-border working
- Education and community engagement
- Local authority and landowner liaison

The Draft Strategy – Local Habitat Map



Nature
Recovery
Hampshire

13



Areas of Particular Importance for Biodiversity (APIB):

- Includes:
- National conservation sites
- Local Nature Reserves
- Local Wildlife Sites (SINCs)
- Irreplaceable habitat

Areas of Particular Importance for Biodiversity (APIB)

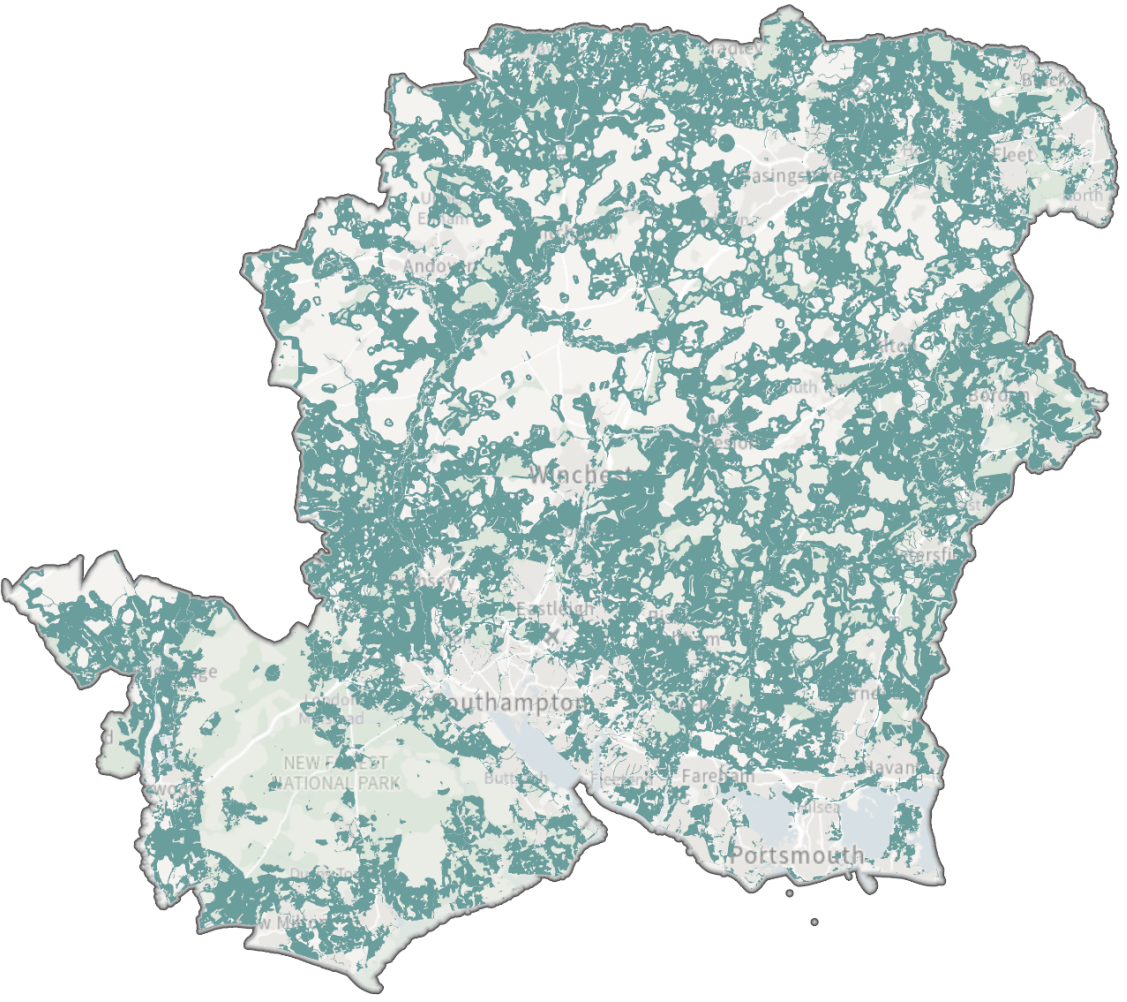
© Crown copyright and database rights 2024 Ordnance Survey [100019180]
© Crown copyright Hampshire County Council 2024
© Crown copyright HBIC 2024
© Crown copyright Natural England 2024

The Draft Strategy – Local Habitat Map



Nature
Recovery
Hampshire

14



- LNRS Boundary - Hampshire
- Areas That Could Become of Particular Importance for Biodiversity (ACB)

Areas that
Could become
of Particular
Importance for
Biodiversity
(ACB)

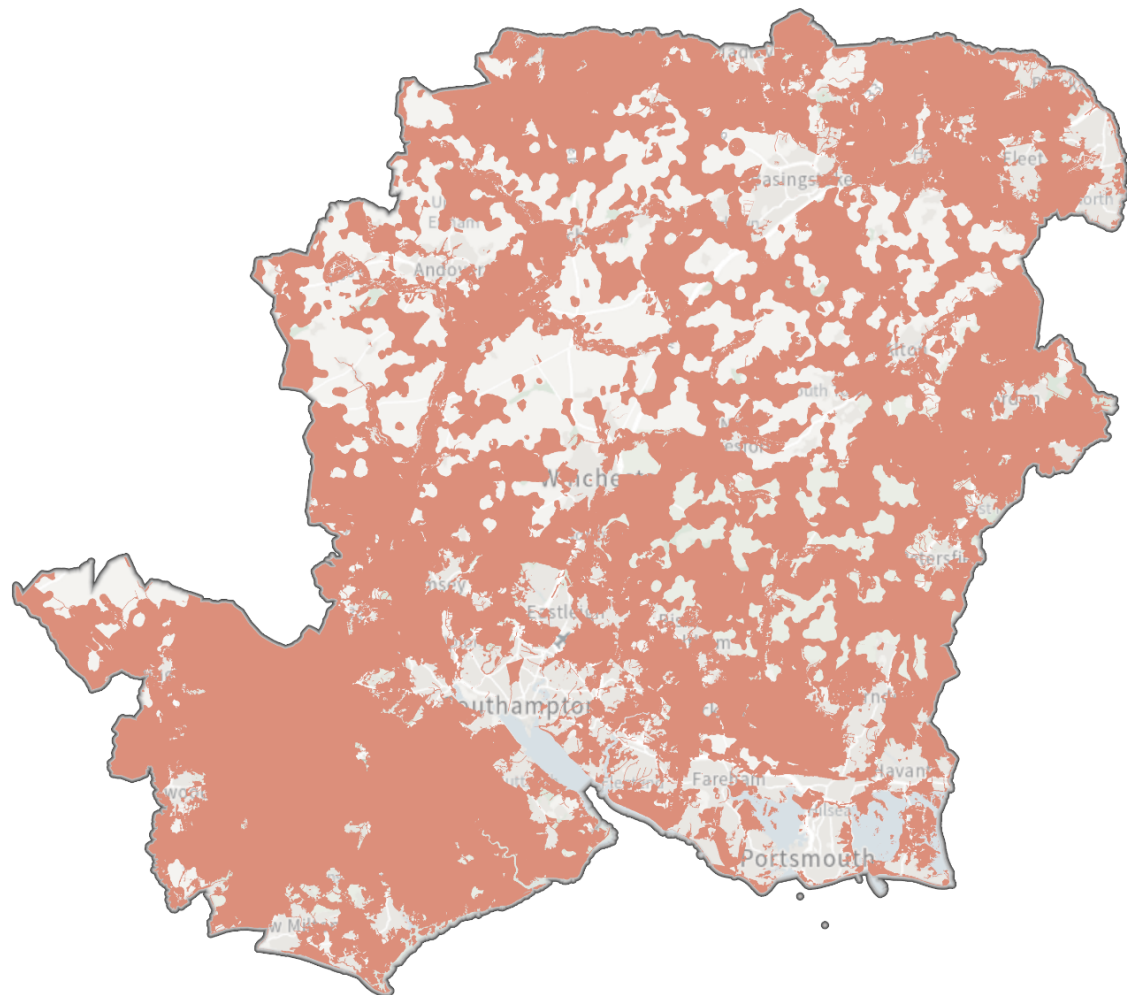
Includes all sites mapped
on the Measures Map
minus the sites on the APiB
Map

© Crown copyright and database rights 2024 Ordnance Survey [100019180]
© Crown copyright Hampshire County Council 2024
© Crown copyright HBIC 2024

The Draft Strategy – Local Habitat Map



15



LNRS Boundary - Hampshire
Measures

© Crown copyright and database rights 2024 Ordnance Survey [100019180]
© Crown copyright Hampshire County Council 2024
© Crown copyright HBIC 2024

Measures

- Include measures for:
 - Opportunity maps for 11 priority habitats
 - Riparian buffers
 - SINCs in known poor condition
 - PAWs woodland
 - SWBG sites
 - Special Protection Zones (SPZs)
 - 110 sites specifically provided by LNRS partners that are underway or approved/planned for nature recovery

Potential Measures



Farming and Nature
Creation of skylark plots
Creation of nesting plots for lapwing
A supplement for threatened species
Management of grassland for target features
Provide cultivated areas for arable plants
Provide unharvested cereal headlands
Protection of in-field trees
Creation/management of 4 to 6m buffer strips
Establishment of an agroforestry system
Pollinator strips
Hedgerows
Management of hedgerows
Planting new hedges
Planting standard hedgerow tree
Parkland/Wood Pasture/Veteran Trees
Planting standard parkland tree
Restoration of lowland wood pasture/parkland
Creation/management of wood pasture
Traditional orchards
Creation/management of traditional orchards
Woodlands, trees and scrub
Woodland Creation/management
Woodland improvements
Management for priority woodland species
Woodland edges on arable land
Creating successional areas of scrub
Deer control and management
Squirrel control and management
Restoring PAWs
Improving (permissive) access to woodlands
Rhododendron control

Species-rich Grasslands
Management of species-rich grassland
Restoration of grassland towards species-rich grassland
Creation of species-rich grassland
Scrub control (and felling diseased trees)
Scrub management within woodland
Heathlands and Acid Grassland Mosaics
Management of lowland heathland
Restoration of heathland from forestry
Creation of heathland
Controlling bracken
Dog control measures
Rivers, other watercourses and groundwater protection zones
Creation and management of 4 to 6m buffer strips
Creation and management of 12 to 24m buffer strips
Reversion of arable land to grassland with low fertiliser input
Management of intensive grassland adjacent to a watercourse
Creation and management of a riparian buffer strip - 4m to 12m
Flood mitigation on permanent grassland
Managing and enhancing river/floodplain habitat connectivity
Low nitrogen input to slow nutrient levels in groundwaters
Control Mink
Reduce the impact of road and urban runoff
Removal of Fish barriers
Managing bankside trees

Ponds and ditches
Buffering in-field ponds and ditches
Manage ditches (e.g. for their vegetation)
Managing ponds
Pond creation/Management
Creation of scrapes and gutters
Restoration of large water bodies
Fen and Reedbeds
Creating fen and managing it
Wetland cutting and wetland grazing
Creating reedbed or managing/restoring it
Wetland Birds
Creation/management of wet grassland for breeding waders
Creation/management of wet grassland for wintering waders and wildfowl
Coastal Habitats
Creation/management of coastal sand dunes/vegetated shingle
Management of coastal saltmarsh
Creation of inter-tidal /saline habitat
Management of coastal floodplain grazing marsh
Dog control measures
Invasive non-native species (INNS)
Controlling invasive plant species
Green and Blue spaces and transport/access related
Improve nature on amenity land
Improving biodiversity on Brownfield sites
Plant more Street Trees
Improve biodiversity on Road Verges
Improve biodiversity along travel routes
Survey, monitoring and evaluation



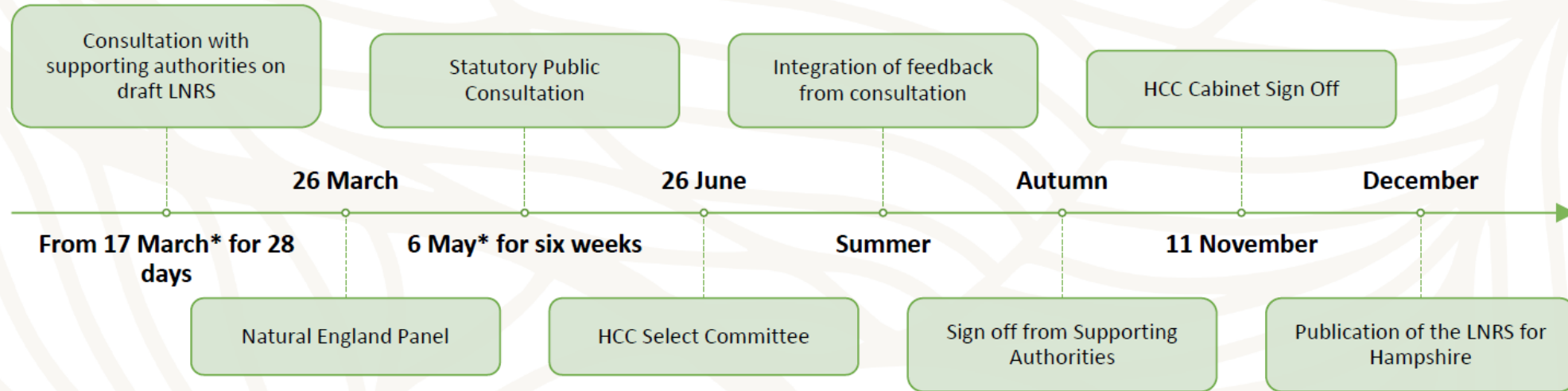
Priority Species

- Long list of **1,618** species was generated by the Hampshire Biodiversity Information Centre (HBIC)
- Following the Species Recovery workshop **412** Priority Species were selected for the shortlist of which:
 - **90** are Priority Species requiring targeted action
 - **120** species are confined wholly to the New Forest SSSI. These do not require management measures in addition to those already covered in the SSSI/SAC management plans, however are present in the priority assemblage list for the purposes of awareness raising.
 - **202** species occur within assemblages where more generic but targeted measures can be applied to their habitat.

Timeline 2025



**Please note there is up to two weeks flex in these dates*





More information and contact details

Nature Recovery Hampshire Web Pages:

www.hants.gov.uk/landplanningandenvironment/nature-recovery-hampshire

Nature Recovery email address: nature.recovery@hants.gov.uk

Local Nature Recovery Strategy for Hampshire Project Team:

Laura McCulloch - laura.mcculloch@hants.gov.uk

Nicky Court - nicky.court@hants.gov.uk

Jemima Phipps - jemima.phipps@hants.gov.uk

This page is intentionally left blank